

VILLAGE BUZZ



A MONTHLY ONLINE MAGAZINE FOR VILLAGES NESTLING IN AND AROUND THE NADDER VALLEY

JUNE 2024

BARFORD ST MARTIN, BAVERSTOCK, BURCOMBE, CHICKSGROVE, COMPTON CHAMBERLAYNE, DINTON,
FOVANT, SUTTON MANDEVILLE, SUTTON ROW, TEFFONT EVIAS, TEFFONT MAGNA, TISBURY, UGFORD



Welcome to
June's issue

Bearded Iris looking beautiful



This is a PDF file with INTERACTIVITY.
Simply CLICK or TAP any email, web address or page link.



We combine traditional building skills, passed down through generations, with modern day techniques and materials to fulfil your lifestyle aspirations.

That's why we make great buildings that stand the test of time. Buildings made for living. A place that people call home. Not just for now, but for generations to come.

MOULDING

THE COUNTRY HOUSE BUILDERS

01722 742228 | thecountryhousebuilders.co.uk



Contents page

Just **click** or **tap** on any of the panels below to take you to the relevant page.



Species of the month
Honeysuckle
Peter Thompson
page 4



News from our villages
page 23



Poetry:
The Whitsun Weddings
Philip Larkin
page 16



Brain Gym
page 40



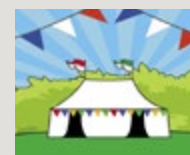
Moviola Cinema
Bishopstone
page 30



Nadder Valley Benefice
Church Services
page 44



BARFORD FÊTE
Save the date
page 28




TEFFONT SHOW
Save the date
page 48

Dear Reader: Do you have an interesting article inside you or a funny tale or memorable experience hidden away? A special poem, a fascinating family history or a passionate interest that you'd like to talk about? Please let us have it and we will create some beautiful pages on your topic for you, and everybody else to read and enjoy.

Please email me at: our **NEW** email address

jan@villagebuzz.online



Species of the month

Honeysuckle

Peter Thompson, Barford St. Martin

***“So doth the woodbine the sweet honeysuckle gently entwist –
Oh how I love thee! How I dote on thee!”***

This line from Shakespeare’s *‘A Midsummer Night’s Dream’* shows that he, like me, was obviously a fan of the wild honeysuckle that tumbles from our hedgerows at this time of the year, filling the evening air with its heavy perfume, especially if there has been a shower of rain.

Many of us have a wide array of different honeysuckles growing in our garden, bought from the garden centre because the eye was caught by the label stating ‘flowers throughout the summer and fills the air with its intoxicating scent’. Most of these plants are more ‘showy’ than our native *Lonicera periclymenum*, but I think that our wild one competes with any of them for the fragrant perfume that it exudes. What is more, search a hedgerow to find a twisting branch of wild Honeysuckle and pin it to the ground and before long it will produce its own little roots. Then cut it from its parent and take it home and plant it near to where you sit out in the evening, so that you can enjoy its heady scent – all for free!

Honeysuckle also frequents our woodland and clammers up (always clockwise) the smaller shrubs onto the lower branches of the trees, before going on up into the canopy to reach the light, often growing to 30 feet in height. Both in woodland and hedgerows, this deciduous plant’s early growth of leaves attracts nesting birds, which also often pull

off strips of its papery bark to help build their nests. Indeed, as I write this, there is a dunnock feeding its newly-hatched young in a dense honeysuckle clump right next to the window. Dormice also use these bark strips to make their nests, often almost exclusively from them.

A number of insect species, including caterpillars of the beautiful White Admiral butterfly, which is found in many of our local woods, feed on honeysuckle.

Long-tongued bumblebees (some species of bumble bee have long tongues, while others have short to medium length tongues!) can reach the nectar, which sits deep in the flower. The delicious perfume that honeysuckle gives off as night falls has a purpose of course – most things in the natural world do. The fact that the flowers give off scent once the sun goes down gives us the clue – the plant is mainly pollinated by moths, especially the long-tongued hawkmoths, which fly in

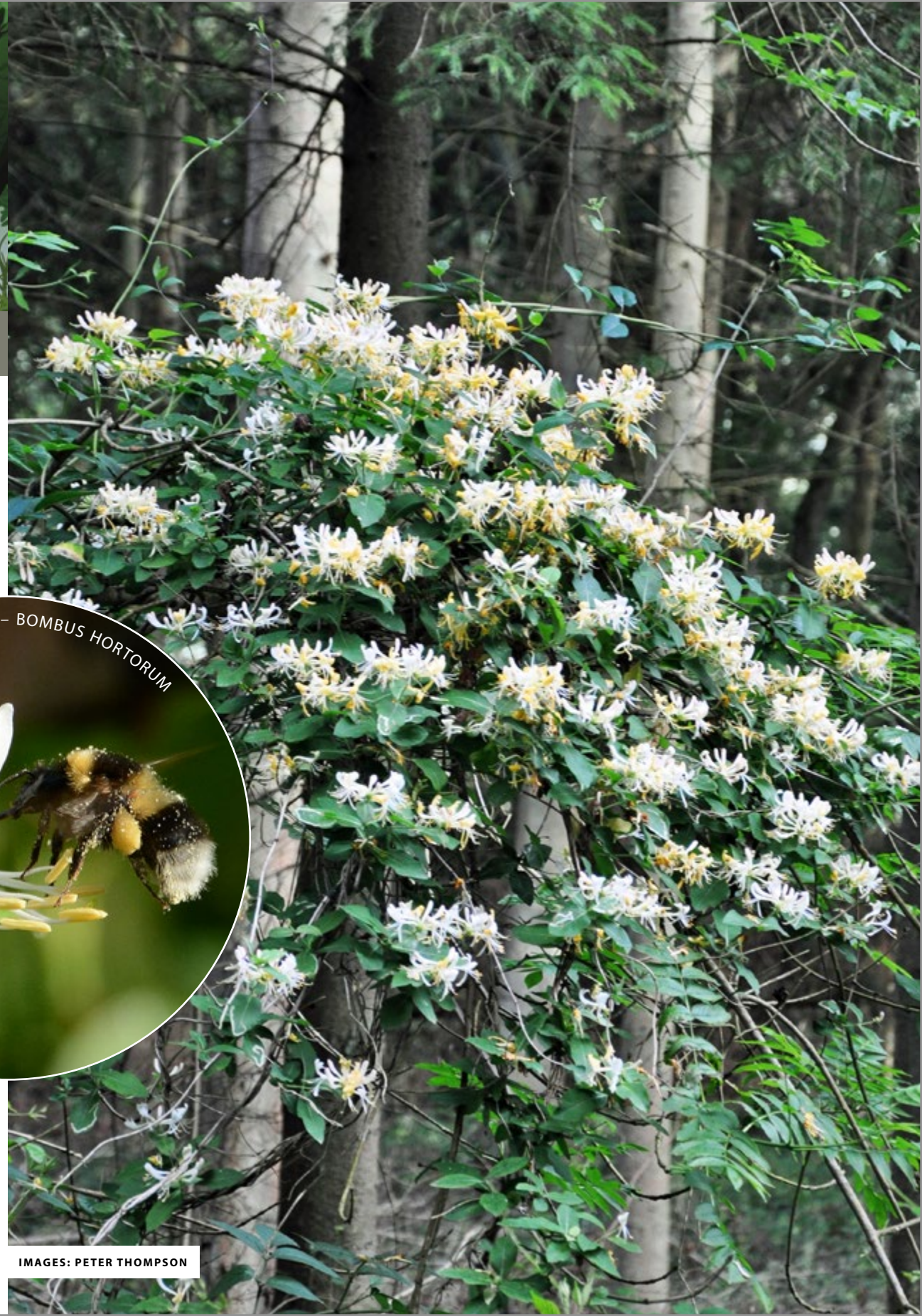




IMAGE: PETER THOMPSON

to imbibe the rich nectar within the flowers. I expect, as children, some of you will have also sucked the nectar from the bottom of the flower tube – so wonderfully sweet!

Eventually, these pollinated flowers turn into red and then ultimately black berries, much sought out by a range of birds – especially some of the summer visiting migrant warblers such as the chiffchaff and blackcap, which gorge themselves on these rich berries before embarking on their long journey southwards.

Humans have also sought out the woodbine, as honeysuckle is often called, as in the past it was considered a favourite plant of witches who ‘passed their patients nine times through a girth of garland of green woodbine’ to cure them of their illnesses. Also highly

prized are hazel rods that have had the tightly creeping honeysuckle growing up them, leaving spiral grooves indented on the stem, ideal for turning into a walking stick.

So, the next time you pass a flowering wild honeysuckle, stop for a while to take in this ‘essence of summer.’ Your day is sure to be much improved thanks to this fragrant short pause. — **PT**

Peter Thompson lives in Barford St. Martin and has worked in conservation and farming all his life. He is Chair of the Salisbury & District Natural History Society and would be delighted if readers joined either the society’s Facebook page or the society itself – or indeed both! If you are interested, please see details on the next page.

CURTAINS ~ CUSHIONS



BLINDS ~ LOOSE COVERS



HAND-MADE, USING TRADITIONAL SOFT FURNISHING TECHNIQUES
IN TISBURY, WILTSHIRE

UPHOLSTERY SERVICE ~ SUPPLIER OF ELECTRIC TRACKS, POLES, SHUTTERS

07846 853636 ~ FOXANDAPPLEINTERIORS@OUTLOOK.COM

WWW.FOXANDAPPLEINTERIORS.COM  @FOXANDAPPLEINTERIORS

SALISBURY & DISTRICT NATURAL HISTORY SOCIETY



REGULAR FIELD MEETINGS & INDOOR TALKS

Founded in 1952, the society studies and records the natural history of Salisbury and the surrounding area.

No expertise is needed to join us! Everyone with an interest in nature and the countryside is welcome.

Annual subscription is only £10
Family membership – £15
Junior membership – Free

So, if you would like to find out more about the wildlife in your local area, and meet friendly, like-minded people, go to:

www.salisburynaturalhistory.com



www.facebook.com/groups/salisburynaturalhistorysociety



CLICK or TAP to go back to the CONTENTS PAGE

Trekkers return after gruelling journey to Colombia's Lost City to support Stars Appeal

A group of Stars Appeal supporters have returned after a gruelling trek to the Lost City in Colombia, amongst them was 80-year-old Grace Prince, who is believed to be one of the oldest women to have completed the journey.

The 33 trekkers, aged from 80 to 22, faced days of torrential rain as they hiked to the 1,500-year-old Lost City of Teyuna to raise money for the Stars Appeal. They walked between six and 12 hours a day. After their long days of walking they stayed in simple communal bunkhouses, before getting up at 4.30am to start again.

Grace, from South Newton, whose first Stars Appeal trek was along the Great Wall of China in 2019, is believed to be the oldest woman to have completed the trek to the Lost City with Magic Tour Colombia.

She said: "I've never had much confidence so this just shows what you can do if you put your mind to it." To reach the Lost City, the trekkers had to climb 1,200 near vertical ancient stone steps.

"The most challenging moment of this year's trek was the mud and keeping your grip while walking in it. The 1,200 steps were a challenge, you just looked at them and thought there's no way you can do that," admits Grace. Praising her fellow trekkers, she added: "Everybody is amazing and achieved it. We've all found it a challenge in one way or another, from slipping in the mud or having sore feet, to not having enough socks or sleep and the cold showers."

In total, the trekkers hiked over 50 miles and ascended over 3,400m – more than the combined height of the UK's highest mountains, Ben Nevis, Snowdon, and Scafell Pike. First-time trekker and local GP Dr Helena McKeown, from Harnham, said: "It was the most physically and psychologically demanding challenge I've ever done. Seeing the Lost City was a real privilege, but what was most special was the camaraderie and support from everybody in the group. It was a life-changing experience and something I will remember for the rest of my life." And three-time cancer survivor Colin Ford, from Salisbury, who also did the Stars Appeal trek to Petra in 2022, added: "It was just incredible. The torrential rain and mud was really tough.

"Everyone that has supported you helped you to keep going. You know you're doing it for them and everyone using the hospital."

"The Stars Appeal helped me when I was going through treatment and raising money for the charity will help continue that support for others at Salisbury Hospital," continued Colin.

When they reached the Lost City the trekkers received a blessing from the spiritual leader.

Colin said: "It's such an amazing place, very serene. It is something I will never forget."

For Wendy Christie, from Salisbury, who was trekking for the first time with her daughter Hermione, this was a challenge unlike anything she has attempted before.

In 1991, while living in Hong Kong, she sustained a spinal injury after a skydiving accident - resulting in paralysis from the waist down. She underwent spinal surgery and intense physical therapy which helped her to walk again. However, she still has significant loss of feeling in her right leg and weakness down that side due to damage to her spinal cord.

Describing the conditions, Wendy explains: "There was more mud than you knew what to do with. There were rivers of water running down the hills that we were trying to climb. The first two days of the trek the rain was just relentless."

"It was the biggest physical challenge I've undertaken," said Wendy. "There was an element of proving to myself that I could achieve this because once upon a time I thought I would never walk again."

Money raised by the trekkers will fund projects providing extra care and equipment across Salisbury District Hospital. All of the trekkers have paid for their own trek costs.

A special presentation will be held in June to announce the group's fundraising total.



www.starsappeal.org



The trekkers at the Lost City of Teyuna



Lawn care to the highest possible standards

Get an INSTANT, no obligation quote by using our online lawn measuring tool in 3 easy steps:

[GET INSTANT QUOTE](#)

- 1 Enter your postcode
- 2 Outline your lawn
- 3 Submit your details



What makes Lawntech stand out from the crowd?

-  A track record of over 30 years experience, delivering consistent professionalism
-  Highly qualified and accomplished technicians with over 130 years of combined experience
-  Offering a sustainable approach to lawn care, using semi organic fertilisers. Fully organic treatment programme available

FREEPHONE 08000 665 465

Free to call - landlines and mobiles

info@lawn-tech.co.uk

www.lawn-tech.co.uk



Lawntech™



CLICK or TAP to go back to the CONTENTS PAGE



Boiler Servicing & Maintenance

BREAKDOWNS | REPAIRS | OIL | GAS | LPG

Mark Benfield

01747 828689 or 07974 249287

mark@mabheatingservices.co.uk

Join our Heating Oil BUYING CLUB!

and SAVE up to 10% on your heating oil cost!

- FREE TO JOIN
- Independent of suppliers
- Order for more than one location
- Pay the supplier direct
- Local suppliers and depots
- Fortnightly reminders and opportunities to place orders
- Monthly budget scheme available
- Over 1200 members buying 1.5 million litres annually!

FOR MORE INFORMATION & FREE REGISTRATION

www.nadder.oilbuyingclub.com



COMPTON MCRAE

KITCHEN | LARDER | CAFÉ
CHEESE | WINE | SEMLEY



01747 448750

info@comptonmcræ.com

www.comptonmcræ.com



Monday to Friday 9am-4pm

Saturday 9am-3pm

Unit 2 Chaldicott Barns, Semley SP7 9AW



Beautifully Built to Last

Award winning building contractors covering every detail of your project from concept to hand over



P.F. Parsons Ltd

Hindon | 01747 820 422 | www.pfparsons.co.uk

[pfparsonsltd](https://www.instagram.com/pfparsonsltd)

Village Buzz has a new, easily memorable web and email address!



villagebuzz.online
after all, that's where we are – *online*

gill@villagebuzz.online | jan@villagebuzz.online



Philip Arthur Larkin was born in 1922 in Coventry. He was the second child and only son of Sydney and Eva Larkin. He attended the City's King Henry VIII School between 1930 and 1940. After leaving school, he went to St. John's College, Oxford, and despite the war (Larkin had failed his army medical because of his poor eyesight), was able to complete his degree without interruption, graduating in 1943 with First Class Honours in English. His closest friends at Oxford were Kingsley Amis and Bruce Montgomery.

After graduating, Larkin lived with his parents for a while, before being appointed Librarian at Wellington, Shropshire where he studied to qualify as a professional librarian. In 1945, ten of his poems, appeared in Poetry from Oxford in Wartime.

In 1946, Larkin became assistant Librarian at the University College of Leicester. In October 1950, he became Sub-Librarian at Queen's University, Belfast.

Larkin took up the position of librarian at the University of Hull in 1955 and it was here that he developed the poetry that would be the foundation of his reputation as one of the greatest poets of the 20th century.

His last collection, High Windows was published in 1974 and confirmed him as one of the finest poets in English literary history. Larkin received many awards in recognition of his writing especially in his later years and in 1975 he was awarded the CBE.

In 1985 Philip Larkin died at the age of 63.

'The Whitsun Weddings' is one of the best known poems by British poet Philip Larkin. It was written and rewritten and finally published in the 1964 collection of poems, also called 'The Whitsun Weddings'. Larkin describes a stopping-train journey southwards from Paragon station in Kingston upon Hull, where he was a librarian at the university, on a hot Whit Saturday afternoon. It has always been supposed the poem was based on an actual train journey Larkin made in 1955 on Whit Saturday, a day which was popular for weddings at that time.

The Whitsun Weddings

PHILIP LARKIN

That Whitsun, I was late getting away:
Not till about
One-twenty on the sunlit Saturday
Did my three-quarters-empty train pull out,
All windows down, all cushions hot, all sense
Of being in a hurry gone. We ran
Behind the backs of houses, crossed a street
Of blinding windscreens, smelt the fish-dock; thence
The river's level drifting breadth began,
Where sky and Lincolnshire and water meet.

All afternoon, through the tall heat that slept
For miles inland,
A slow and stopping curve southwards we kept.
Wide farms went by, short-shadowed cattle, and
Canals with floatings of industrial froth;
A hothouse flashed uniquely: hedges dipped
And rose: and now and then a smell of grass
Displaced the reek of buttoned carriage-cloth
Until the next town, new and nondescript,
Approached with acres of dismantled cars.

At first, I didn't notice what a noise
The weddings made
Each station that we stopped at: sun destroys
The interest of what's happening in the shade,
And down the long cool platforms whoops and skirls
I took for porters larking with the mails,
And went on reading. Once we started, though,
We passed them, grinning and pomaded, girls
In parodies of fashion, heels and veils,
All posed irresolutely, watching us go,

As if out on the end of an event
Waving goodbye
To something that survived it. Struck, I leant
More promptly out next time, more curiously,
And saw it all again in different terms:
The fathers with broad belts under their suits
And seamy foreheads; mothers loud and fat;
An uncle shouting smut; and then the perms,
The nylon gloves and jewellery-substitutes,
The lemons, mauves, and olive-ochres that

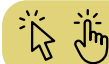
Marked off the girls unreally from the rest.
Yes, from cafés
And banquet-halls up yards, and bunting-dressed
Coach-party annexes, the wedding-days
Were coming to an end. All down the line
Fresh couples climbed aboard: the rest stood round;
The last confetti and advice were thrown,
And, as we moved, each face seemed to define
Just what it saw departing: children frowned
At something dull; fathers had never known

Success so huge and wholly farcical;
The women shared
The secret like a happy funeral;
While girls, gripping their handbags tighter, stared
At a religious wounding. Free at last,
And loaded with the sum of all they saw,
We hurried towards London, shuffling gouts of steam.
Now fields were building-plots, and poplars cast
Long shadows over major roads, and for
Some fifty minutes, that in time would seem

Just long enough to settle hats and say
I nearly died,
A dozen marriages got under way.
They watched the landscape, sitting side by side
—An Odeon went past, a cooling tower,
And someone running up to bowl—and none
Thought of the others they would never meet
Or how their lives would all contain this hour.
I thought of London spread out in the sun,
Its postal districts packed like squares of wheat:

There we were aimed. And as we raced across
Bright knots of rail
Past standing Pullmans, walls of blackened moss
Came close, and it was nearly done, this frail
Travelling coincidence; and what it held
Stood ready to be loosed with all the power
That being changed can give. We slowed again,
And as the tightened brakes took hold, there swelled
A sense of falling, like an arrow-shower
Sent out of sight, somewhere becoming rain.

PHILIP LARKIN, "THE WHITSUN WEDDINGS"
FROM WHITSUN WEDDINGS. COPYRIGHT © ESTATE OF PHILIP LARKIN.





COMPTON SMITH INTERIORS



COMPTON SMITH INTERIORS



www.comptonsmith.co.uk
FULL INTERIOR DESIGN SERVICE

- Interior decorating consultancy.
- Bespoke curtains, blinds and upholstery.
- Suppliers of well-known specialist paints, wallpapers & fabrics:
Farrow & Ball, Little Greene, Pierre Frey, Colefax & Fowler, Sanderson Design Group, Lewis and Wood and many more designers.

Monday to Friday: 8.30am to 5.30pm
Friday: 8.30 to 5.00pm
Saturday: 9.30am to 1.00pm



10d Wincombe Business Park, Shaftesbury, Dorset SP7 9QJ
Tel: +44 (0)1747 850150 info@comptonsmith.co.uk



CLICK or TAP to go back to the CONTENTS PAGE



Photo Credit: Spencer Mulholland Photography



It's a record breaker! Fabulous Family Fun Day raises in excess of £31,000 for Salisbury Hospice Charity on the event's 10th Anniversary

The 10th annual Fabulous Family Fun Day, kindly sponsored by Ozweld International, took place at Salisbury Rugby Club on Saturday 11th May. The Fun Day is organised in memory of Lyn Futchter, who

was supported by the hospice in 2013. The football tournament, sponsored by Jones & Co proved as popular as ever, and the touch rugby tournament, sponsored by Adam's Autos was competitive from start to finish. The live music stage with a variety of performance from local bands and singers, a day full of entertainment for children, and a much enjoyed beer tent for the adults, added to the day. More upbeat family entertainment was provided in the main performance arena, which was new for the 10th anniversary, and sponsored

by Complete Construction Ltd. The raffle, with a chance to win a holiday in Turkey for four people, kindly donated by Beyaz Villas, was as popular as ever. 2024 was the year that raised the most money ever

'I am once more humbled by how incredibly hard this dedicated committee of Greig, Sarah, Spencer, Sam, Clare and Jason work; they are truly remarkable.'
Tamsin Murley
Community Fundraiser

for Salisbury Hospice Charity, helped by a sunny day and record attendance. Salisbury Hospice Charity is so grateful not only to Ozweld International and our other wonderful sponsors, but also we extend a huge thank you to the fabulous committee,

Salisbury Rugby Club, raffle prize donors, performers, supporters, dedicated volunteers and everyone who came along to have fun at the event, for making this day feasible and achieving such an incredible amount for the hospice. Chairman of the fundraising committee,



Greig Futchter had the following to say, 'That'll do! Brilliant – thank you so much everybody'.

Tamsin Murley, Community Fundraiser for Salisbury Hospice Charity added 'I am once more humbled by how incredibly hard this dedicated committee of Greig, Sarah, Spencer, Sam, Clare and Jason work; they are truly remarkable. We are also so very grateful to Ozweld International, Salisbury Rugby Club and everyone who supported us in many different ways to put on this wonderful event. To raise £31,000 in one day is a remarkable achievement; every penny raised will go towards funding the vital services that the hospice provides, free of charge, to members of the community.' ■

About: Salisbury Hospice Charity and Salisbury Hospice

- Salisbury Hospice Charity aims to raise £1.5 million of the £2.9 million running costs of the hospice each year.
- Hospice services are free to patients, their families and carers.
- Salisbury Hospice is the only provider of specialist palliative care in our community.
- Many patients do have cancer but others have long term conditions such as chronic lung disease, motor neurone disease and heart failure.
- The hospice supports people not just within the last few weeks of life but for up to a year or even longer.
- The hospice helps nearly 1,000 people every year.
- The hospice provides physical, spiritual, emotional and social care to patients, their families and carers. Care is provided for people in their own homes and through non-residential and inpatient services in Salisbury Hospice.



ACCOUNTANCY SERVICES

Salisbury and the Nadder Valley

Are you a small business or individual looking for help with your accounts, VAT or self assessment tax returns?

Do you need help with Making Tax Digital? If so, get in touch!

Sara Sawyer, MAAT

EVE DAY ACCOUNTANCY Ltd

info@eve-day.co.uk

07919 664160



Compton Chamberlayne

St Michael's Church, Compton Chamberlayne

20th July 2024

Acis and Galatea

by George Frideric Handel



An unmissable opportunity to hear three internationally acclaimed performers Nick Pritchard, Lucy Crowe and Will Thomas at their very best. Supporting them will be nine exceptionally talented musicians under the renowned directorship of David Bates of *La Nuova Musica* which will ensure a performance to remember! A few tickets remain at **£60 each** (this may seem more than one might anticipate for a village event. However, considering the extraordinary quality of the performers, it represents remarkable value). Guests will be welcomed with a glass of fizz and enjoy substantial refreshments during the interval.

Compton Events

peter.d.combes@gmail.com
richard.willan@icloud.com



David Bates
Direction and Harpsichord

David founded La Nuova Musica in 2007, a vocal and instrumental ensemble dedicated to the music of the Baroque and Classical periods. Recent opera highlights include his debut with Komische Oper Berlin; Handel Il Trionfo del Tempo e del Disinganno for Staatsoper Hannover; a performance of Handel Alcina for Glyndebourne Festival and Purcell Dido and Aeneas at the BBC Proms. He continues his residency at Wigmore Hall with La Nuova Musica.



Acis

Nick Pritchard – Tenor

Nick has performed with The Royal Philharmonic Orchestra, BBC National Orchestra of Wales, Gabrieli Consort, Britten Sinfonia, the Monteverdi Choir and Orchestra, Early Opera Company, St Paul Chamber Orchestra, La Nuova Musica at the BBC Proms, and L'Orchestre de Chambre de Paris.



Galatea

Lucy Crowe – Soprano

Lucy has sung with opera companies worldwide, including the Royal Opera House, Glyndebourne Festival, English National Opera, Teatro Real Madrid, Deutsche Oper Berlin, Bavarian State Opera and the Metropolitan Opera, New York.



Polyphemus

Will Thomas – Bass

A graduate of the Opera Course at the Guildhall School of Music and Drama William is fast making a name for himself as one of today's most promising young singers. He has performed amongst others, at the Wiener Staatsoper, the Opéra national de Paris and the Glyndebourne English National Opera. Future seasons see him return to the Royal Opera, and the Bayerische Staatsoper, Munich.

List of Players

- Violin 1* – Jane Gordon
- Violin 2* – Beatrice Philips
- Cello* – Robin Michael
- Bass* – Judith Evans
- Oboe 1* – Leo Duarte
- Oboe 2* – Sarah Humphries
- Bassoon* – Catriona McDermid
- Theorbo* – Jonatan Bougt
- Organ* – William Whitehead

All proceeds will support the Church.


Sutton Mandeville


Fovant



SAVE THE DATE!
2024 NADDER VALLEY
Flower & Produce Show
SATURDAY 31st AUGUST
3pm, Fovant Village Hall

Flowers, Fruit & Veg
Cakes & Bakes
Arts & Crafts
Raffle
Cream Teas

Formerly Sutton Mandeville
Horticultural Society




Fovant

FOVANT BADGES SOCIETY

ANNUAL
DRUMHEAD SERVICE
Sunday 7th July 2024
3.00pm
 (Please be seated by 2.45pm)
At East Farm Fovant SP3 5JD
 Follow the signs on the A30
 Teas on the lawn afterwards
 (Weather permitting)

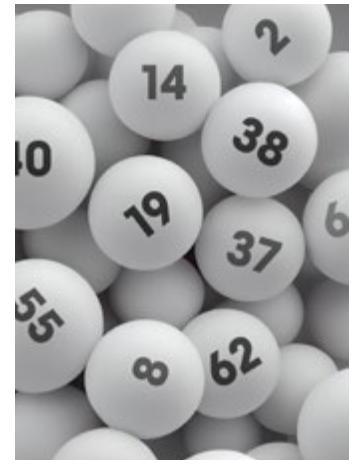
ALL WELCOME!


Sutton Mandeville



MONTHLY
DRAW RESULTS
APRIL 2024
 All Saints Church
 Sutton Mandeville

1st £40 — 1
2nd £20 — 88
3rd £10 — 105



To join in please contact
Kate Clutterbuck
kateclutterbuck5@gmail.com



Barford St Martin



The National Hedgehog Project

A world-first combination of trail cameras, AI and volunteers, is to be used across the UK to investigate robust hedgehog population estimates for the first time. We are lucky to have had five sites chosen in Wiltshire.

This summer Wiltshire Mammal Group is working with the People's Trust for Endangered Species and locally, Barford St. Martin has been chosen as one of the survey sites, led by Peter Thompson. So, we are looking for volunteers to help with installing and removing the cameras.

The 30 cameras will be installed on **Saturday 20th July** and removed on **Monday 19th August**.

A short briefing of what to do, will be held in Barford on the morning of the 20th July. After the cameras have been collected, volunteers will also be needed to go through the camera images from the comfort of their homes!

If you would like to find out more and potentially help with this project – then please contact Peter on: peter.gl.thompson@outlook.com



CLICK or TAP to go back to the CONTENTS PAGE



Fonthill



Fonthill House Charity Garden Opening

in aid of the Atlantic Salmon Trust
Sunday 9th June 2024. 12pm – 5pm



The iconic wild Atlantic salmon is now an endangered species in Great Britain.

Across the North Atlantic its numbers have crashed by over 70% in the last 30 years. The Atlantic Salmon Trust is on a mission to restore this incredible keystone species, and the environment it depends on, before it's too late.

To book tickets scan the QR code.



Find out more about The Atlantic Salmon Trust at
atlanticsalmontrust.org

The Atlantic Salmon Trust, Orchard House, Kilgraston Walled Garden, Bridge of Earn PH2 9HN
Company registered in England: Reg No. 904293 Registered Charity No. England 252742 & Scotland SCO 37902



Spectacular Barford Village Fête Goes to the Dogs!

The Barford St Martin Community Fund committee is delighted to announce that Barford's Village Fête, which was so successful in 2022 to celebrate the Queen's Platinum Jubilee, will be held on Saturday 15th June 2024 in the recreation ground in Duck Lane, starting at 1.00pm.

Morag Walker, Chair of the Barford St Martin Community Fund explains the importance of this year's fête. 'We currently have an extremely ambitious programme of projects that aim to make Barford a wonderful place to live. Funds raised at the fête are crucial to help make our projects a reality. For example, we are currently painting our old and tatty village road signs, we are putting up attractive flower-filled troughs and we are setting up a Community Speed Watch project. We are also undertaking an important environmental project that will support our local wildlife. Our aspiration is to make Barford a beautiful and safe place to live for all our residents.'



The Barford St Martin Fête this year is guaranteed to be a fantastic day out for all the family. Highlights will include an action-packed dog show, being organised by expert dog breeder and judge, Vicky Wand. The dog show will have eight classes, ranging from cutest and best crossbreed to golden oldies and even 'the dog the judge would like to take home'. There will even be a best-in-show dog with a special prize for the overall winner. The dog show always receives fantastic support, and all the class winners will be awarded a special show rosette.

More fun for family pooches will be provided by a separate agility course for dogs that wish to show off their prowess on agility equipment. The course is being kindly sponsored by Fieldtastic.

The popular duck race along the River Nadder always attracts a huge crowd keen to bet on the likely winning duck. A cash prize will be up for grabs. In total 200 yellow ducks will be released in the river as part of this exciting competition. It will be quite a spectacle!

In addition, the Barford St Martin fête will have a cornucopia of fun events for all the family, including a tombola, plants, tea and cake stall, Zorbs and lots of other exciting children's entertainment. The Barford Inn will be providing beer and wine, and the village's nursery school will run a special children's crafting and games area. There will also

be a delicious BBQ, freshly made pizza, music, and an energetic display by Wildcatz Warriors Cheerleading.

A new children's painting competition this year hopes to discover the next Vincent van Gogh or Tracey Emin. The challenge is to paint a 'fête scene' on A4 paper. There are three age groups including Under 5, 6-10 and 11-15 years. Paintings should be submitted in advance by 8th June for judging and the lucky winners will receive a super prize.

For those interested in helping to run stalls at the fête, or to sell raffle tickets, which offer some amazing prizes, or for further information about the children's painting competition, please get in touch with **Stephanie Wheatley on: 07840 438832 or email: stephanie.stephanian@hotmail.co.uk**

14TH & 15TH JUNE

THE BARFORD ST MARTIN

RECREATION GROUND, DUCK LANE, SP3 4AN

GRAND SUMMER FETE

FRIDAY 7PM

QUIZ / SUPPER / AUCTION OF PROMISES

BOOK IN ADVANCE ONLY - TICKETS £5

CONTACT
Stephanie - 07840 617 512 or The Barford Inn - 01722 742 242

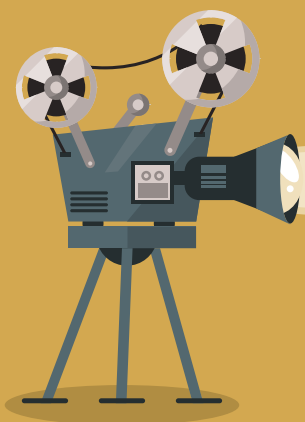
SATURDAY 1PM

DOG SHOW - STALLS - GAMES

COMPETITIONS - MUSIC - TUG-OF-WAR - DUCKRACE

TEAS, CAKE BEER, WINE, BURGERS & PIZZAS

Organised & Sponsored by the Barford St Martin Community Fund, with the generous help of local villagers



Moviola Cinema

Bishopstone

Bishopstone Village Hall SP5 4AA, usually on the last Friday of the month, at 7.30pm. Doors open at 7.00pm when a bar and snacks are available.

Bookings should be made with Caroline either by phone 01722 781044 or email: bvhticketoffice@btinternet.com — Entry is £6, paid on the door by cash, card or cheque.

Wonka (PG)
31 May 2024



Wonka (Timothée Chalamet) comes to prewar Paris as a young man after a life on the ocean wave, determined to make his fortune with the chocolate recipes invented by his mum (Sally Hawkins). His new ideas make him enemies, notably Bleacher (Tom Davis) and Mrs Scrubbit (Olivia Colman), but he wins out with the help of new friends. With Hugh Grant as the original Oompa-Loompa.

The Lesson (15)
28 June 2024



Liam (Daryl McCormack), an aspiring young novelist, is hired to tutor the son of revered author J M Sinclair (Richard E Grant) and his art-dealer wife (Julie Delpy). However, he soon realises that Sinclair, his wife and their son all guard a dark past, one that threatens Liam's future as well as their own. As the lines between master and protégé blur, class, ambition, and betrayal become a dangerous combination in this taut noir thriller.

Wicked Little letters* (15)
26 July 2024

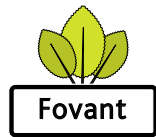


A 1920s English seaside town is the setting for a dark, absurd scandal in this riotous mystery comedy. Based on a stranger-than-fiction true story, it follows two neighbours: deeply-conservative local Edith Swan (Olivia Colman) and rowdy Irish migrant Rose Gooding (Jessie Buckley). When Edith and other residents start to receive abusive letters full of unintentionally hilarious profanities, foul-mouthed Rose is charged with the crime. The case prompts a national uproar, and a trial ensues. However, as the town's women, led by Police Officer Gladys Moss (Anjana Vasana), begin to investigate the crime themselves, they suspect that something is amiss and Rose might not be the culprit after all.

***Summer Supper**
for £6 at 6.00pm
BEFORE the film
showing on July 26th,
please order when
booking, stating any
dietary requirements.



MOVIOLA LTD EXISTS TO PROVIDE A RANGE OF HIGH QUALITY CINEMA-RELATED EVENTS FOR PEOPLE LIVING IN RURAL PARTS OF THE UK, WITH THE AIM OF REDRESSING THE IMBALANCE BETWEEN TOWN AND COUNTRYSIDE IN ARTS AVAILABILITY AND PARTICIPATION.



Entry £7

Fovant House Open Garden

**Saturday 1st June
2.00-5.00pm**

CHURCH LANE, FOVANT, SP3 5LA

**Plant Sale and Homemade teas available,
proceeds to St. Georges Church, National Garden Scheme,
Nursing and Health Charities.**

Children free and dogs welcome on leads.

ENTRY VIA ST. GEORGES CHURCH, CAR PARK OPPOSITE.

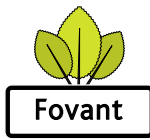
Any cake pledges for the day very welcome, please contact Amanda at:

flint.amanda@aol.com

Could be dropped off the day before 5-6pm



CLICK or TAP to go back
to the CONTENTS PAGE



Fovant Village Happenings

Leslie Brantingham, Fovant

The Badges

You saw in previous editions how great the Badges are looking at present. The maintenance work for this year started in earnest May/June with Jon and Jake (J&J Cooper Fencing) and their associates weeding, strimming and clearing off the ten compounds in advance of the annual Fovant Badges Society Drumhead Ceremony (diary date 7th July, East Farm. All welcome! Open invitation).



The hillside is looking particularly clean and as close to its appearance in 1916 as it has been for decades due to the sterling efforts of Mr P. Williams at East Farm and the amazing tracked remote control scrub-grubber. The sheep now grazing continue this beneficial landscape management...

In the last week in May you may have seen the Royal Signals soldiers working at site on their own cap badge, affectionately known as "Jimmy" (Hermes or Mercury depending on your classical bent) sporting his caduceus (his staff) under the British Crown. This Crown has, since the inception

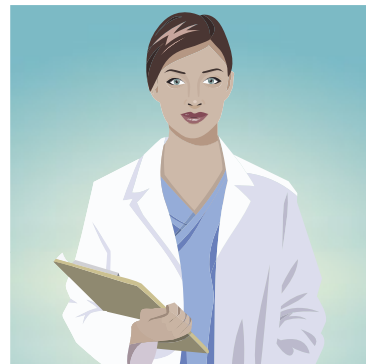
of Jimmy in 1970, been that of the Queen Sovereign. With the death of Queen Elizabeth II and to bring their Emblem into the era of 'C III R' this profile will be eased into the King's Crown profile. The Fovant Badges Society pamphlet is now out on display at local tourist hotspots and of course at the A30 lay-by, and FBS anticipate updating the A30 visitor display this year too.

Defibrillators

By midsummer, FPC will have purchased two more public access defibrillators (AEDs) for the village. The Village Hall hosts the first one installed in 2021. As Fovant is a linear village and a guidance distance of 400 metres two further units are being installed. Wiltshire Council came up trumps by installing a second device (purchased by the PC) on the outside of the Clays Orchard housing building, and the owner of the 'Greater Good' pub has offered to have a third device on the High Street wall of the pub near the bus stop. By the end of the year Fovant residents' homes will be within a practical range of a unit.

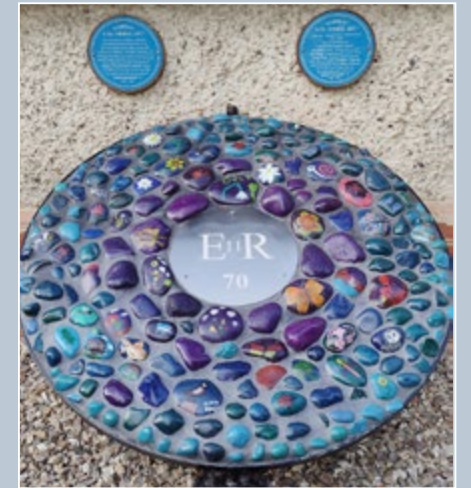
A Doctor Explains.....

Dr Lindsay Kinlin has expanded her successful and very well received talks on various medical issues. Dinton have also now agreed to host these informative and often amusing discursive talks which take place at Fovant Village Hall on the 4th Thursday of the month at 4pm, and earlier in the month at Dinton Village Hall on the 2nd Thursday. It's an open invitation to ALL to all who may be interested (patients and others alike, wherever you live). www.fovantvillage.com/health-well-being



Jubilee 70 Finale

In the village we have seen the completion of all the remaining elements of Fovant's Jubilee '70 tributes. A splendid acer has been planted at the Fovant village hall with its commemorative notice and, after delays due to illness and appalling weather, the 'Pebble Art' Installation is now gracing the west wall of the hall. In the evening sun it looks particularly splendid. All credit to all those who helped see it all through.



The Waterside Hub – a first for Fovant and for Wiltshire

Fovant has completed its development of an **Emergency Contact Hub** in the Waterside (Fovant Youth Club Building, High Street, Fovant).

The Hub will be activated by the Parish Council during local emergencies. Having a back-up power supply the Hub can provide a warm space, lighting, cooking facilities, and preparation of hot drinks during any extended power cuts or other local emergencies.

Crucially, phones can be charged and TV and broadband made available to ensure Fovant residents get up-to-date information about what is happening in the village and elsewhere.

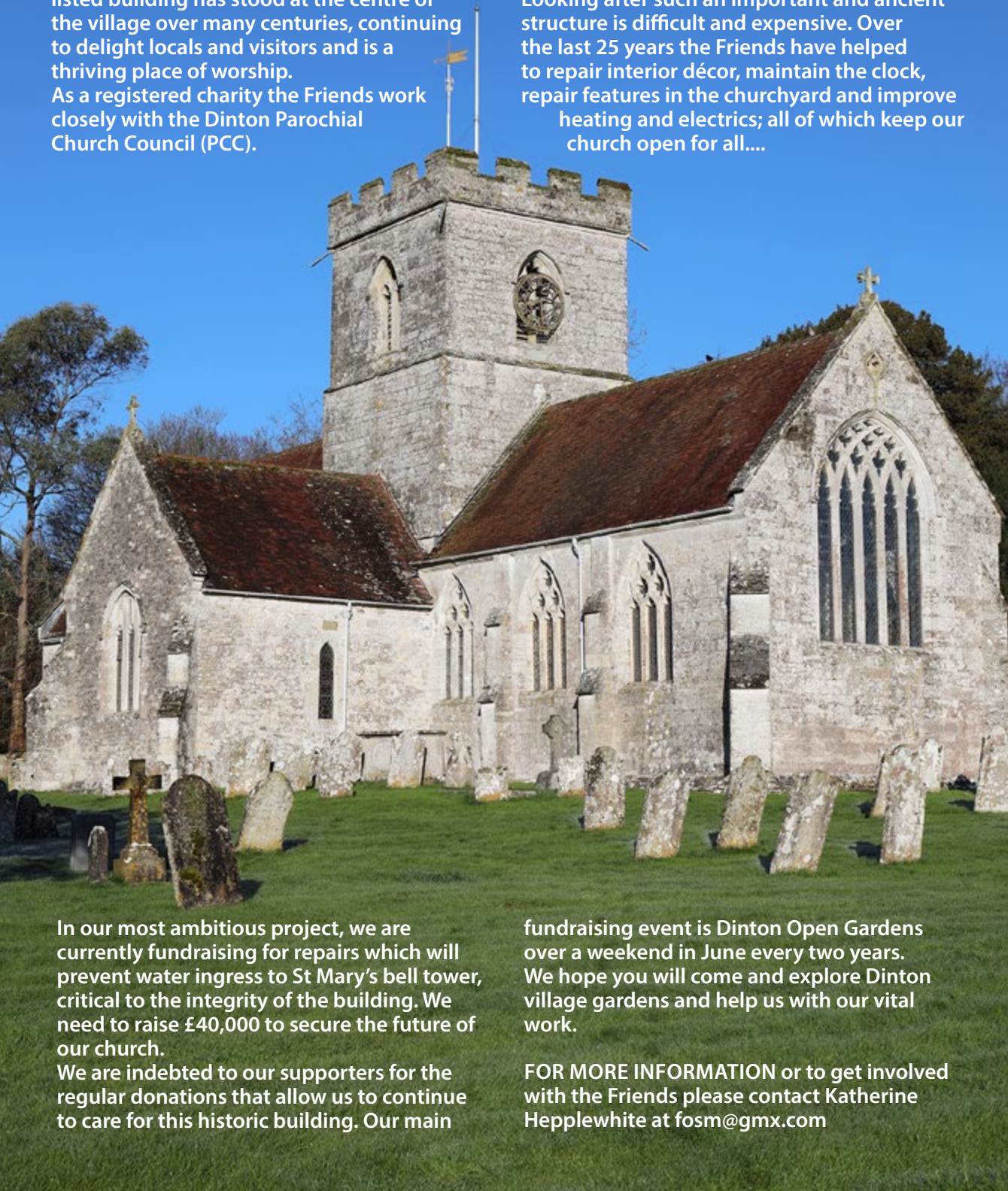
<https://wiltshireandwindonprepared.org.uk>



Friends of St Mary's Church Dinton

ST MARY'S CHURCH is the oldest building in Dinton. Parts of the church are older than Salisbury Cathedral. This beautiful Grade 1 listed building has stood at the centre of the village over many centuries, continuing to delight locals and visitors and is a thriving place of worship. As a registered charity the Friends work closely with the Dinton Parochial Church Council (PCC).

Our objective is to support the PCC in maintaining, preserving and enhancing the fabric of the church. Looking after such an important and ancient structure is difficult and expensive. Over the last 25 years the Friends have helped to repair interior décor, maintain the clock, repair features in the churchyard and improve heating and electrics; all of which keep our church open for all....



In our most ambitious project, we are currently fundraising for repairs which will prevent water ingress to St Mary's bell tower, critical to the integrity of the building. We need to raise £40,000 to secure the future of our church.

We are indebted to our supporters for the regular donations that allow us to continue to care for this historic building. Our main

fundraising event is Dinton Open Gardens over a weekend in June every two years. We hope you will come and explore Dinton village gardens and help us with our vital work.

FOR MORE INFORMATION or to get involved with the Friends please contact Katherine Hepplewhite at fosm@gmx.com



Dinton

Dinton Open Gardens

Saturday 15th and Sunday 16th June

2.00pm until 6.00pm

Looking for an inspiring afternoon out over the weekend of 15th and 16th June? Why not join the hosts of the open gardens of Dinton and have an ogle at their plots full of plants.

From 2.00pm until 6.00pm on both days, a trail of private village gardens are open for you to explore with the owners on hand to answer questions and receive compliments!

The price for the trail is £5, which goes to Friends of St Mary's Dinton Tower Appeal.

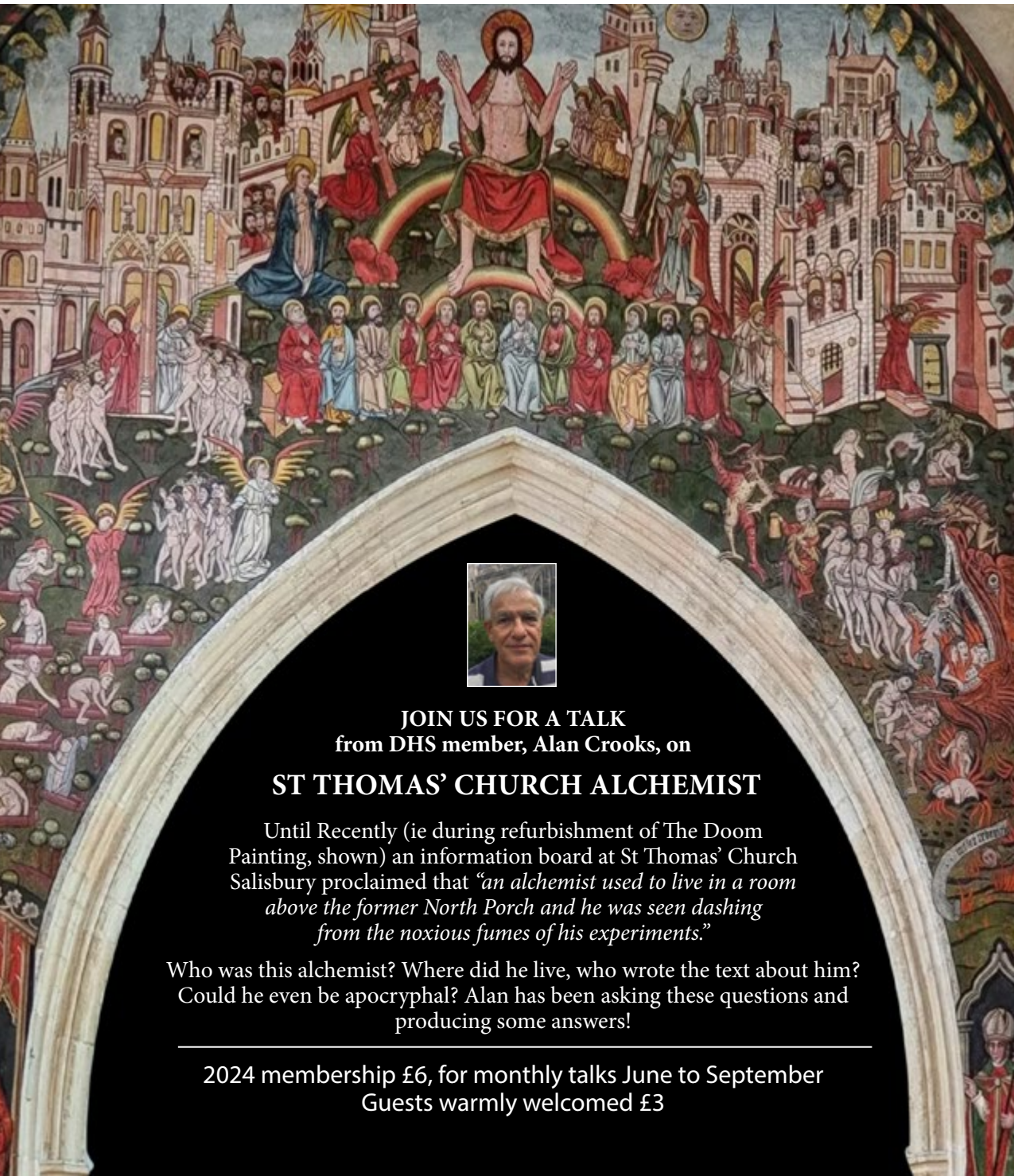
Parking in the National Trust Car Park or use our overflow parking which is free at the Village Hall on Bratch Lane off the Hindon Road. Tea and cake will be available near St Mary's, where you can purchase your ticket on the day – cash only please.





Dinton Historical Society

Thursday 20th June, Dinton Village Hall, 7.30pm



JOIN US FOR A TALK
from DHS member, Alan Crooks, on

ST THOMAS' CHURCH ALCHEMIST

Until Recently (ie during refurbishment of The Doom Painting, shown) an information board at St Thomas' Church Salisbury proclaimed that "an alchemist used to live in a room above the former North Porch and he was seen dashing from the noxious fumes of his experiments."

Who was this alchemist? Where did he live, who wrote the text about him? Could he even be apocryphal? Alan has been asking these questions and producing some answers!

2024 membership £6, for monthly talks June to September
Guests warmly welcomed £3



Compton Chamberlayne



Compton Events

Compton Chamberlayne Village Hall

At 7.00pm

Friday 31st May 2024

£12 to include a glass of wine

A TALK ON ROMAN SANITATION

Have you ever wondered how the Roman Armies coped with sanitation when they were on the move? Well, it was a much bigger undertaking than Glastonbury! A Roman Legion consisted of 5000 men.

Do come and listen again to **Professor Simon Esmonde-Cleary**, Emeritus Professor in Ancient Studies at Birmingham University, who came to Compton Chamberlayne 18 months ago. He spoke about country life in Roman Times which was much enjoyed.

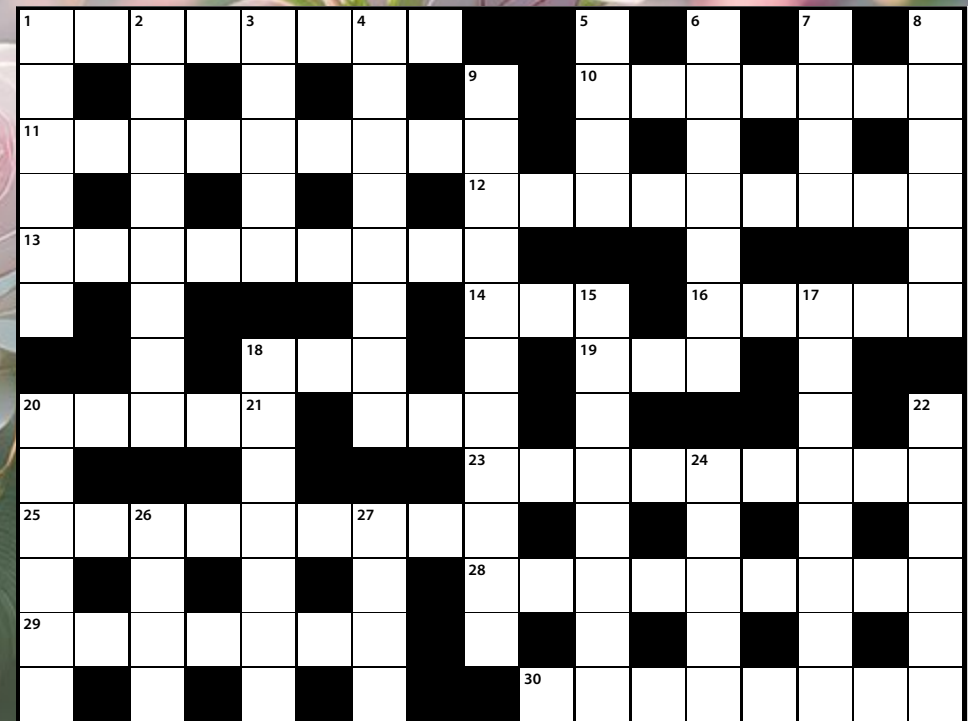
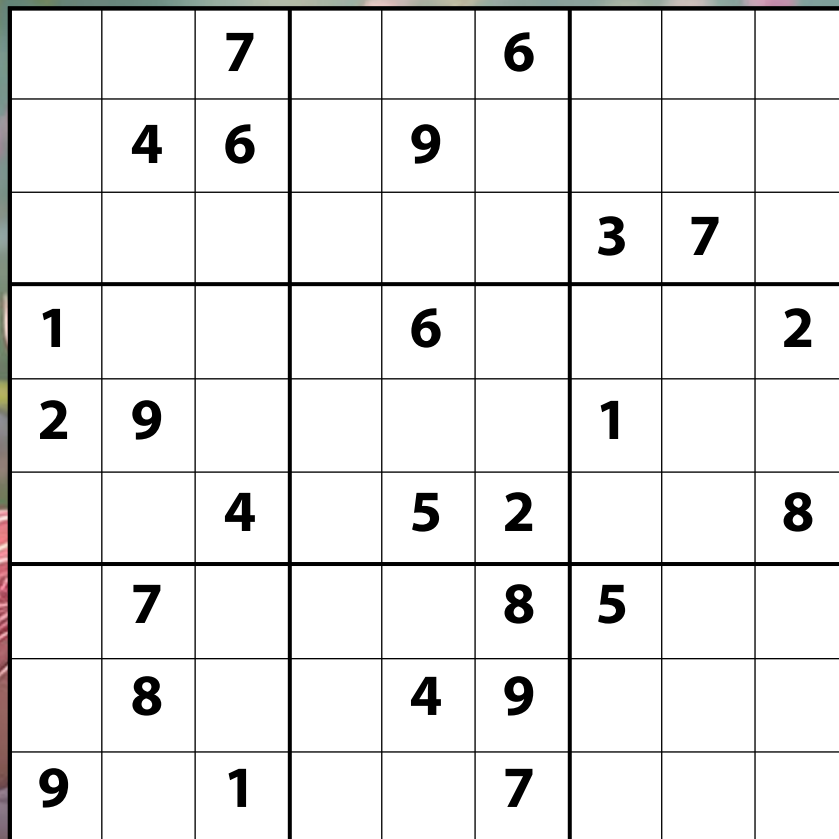
He has some thoughts to share on how he thinks that effluent was managed.

Contact Sara Willan:

sarawillan@gmail.com



CLICK or TAP to go back to the CONTENTS PAGE



TO COMPLETE THESE PUZZLES PLEASE PRINT THIS DOUBLE PAGE SPREAD ON YOUR PRINTER.

IMPORTANT NOTE:
This PDF file treats each double page spread as a single page.

- 1) Set your printer to print **PAGE 21 ONLY**
- 2) Ensure your page is set to **LANDSCAPE** orientation.
- 3) Ensure your printing is reduced to fit your A4 sheet (**80%**). Do not print at 100%.

HOW TO PLAY SUDOKU

The objective of the puzzle is to complete the grid so each of the rows, columns and 3 x 3 sub-grids contains the numbers 1 to 9. The challenging part of the puzzle is that each number can only appear once per row, column, or sub-grid.

SOLUTION PAGE 47



June's Brain Gym

Across

- 1 Laziness (8)
- 10 Florida resort (7)
- 11 Twin hulled boat (9)
- 12 Beach timber (9)
- 13 Brides wardrobe (9)
- 14 Deciduous tree (3)
- 16 Item of value (5)
- 18 Outlaw (3)
- 19 Debt note (3)
- 20 Diving Bird (5)
- 21 Overly (8)
- 23 Uncooperative (9)
- 25 Lake in Cumbria (9)
- 28 Blind (9)
- 29 Most difficult (7)
- 30 Creator (8)

Down

- 1 Provoke (6)
- 2 Unleash (3,5)
- 3 Headings (5)
- 4 NCO (8)
- 5 Asian desert (4)
- 6 Tableland (7)
- 7 Facts (abbr.) (4)
- 8 Stop (4,2)
- 9 Eventually (2,3,6)
- 15 US state (8)
- 17 Quickest (8)
- 18 Among (7)
- 20 Pampas cowboy (6)
- 22 Nearer (6)
- 24 Petrol unit (5)
- 26 Cooking fat (4)
- 27 Carry (4)

SOLUTION PAGE 47

We help towards the cost of education

- Do you need help towards the cost of study e.g. course fees, equipment, books, travel?
- Does your group need help to improve its facilities, or access to its activities?
- Will your event help participants learn new skills or grow in confidence?
- Are you (or your organisation) based in Wilton or the surrounding villages?

If so, WMSET is for you!



Who we help

WMSET offers grants to individuals of any age, as well as organisations within the area.

These may be:

- ▶ Part-funding towards a course of study or larger project
- ▶ Help with meeting the cost of educational essentials (equipment, travel, books etc.)
- ▶ Total funding for a project or an academic course

For more information or to apply
www.wmset.org



Wilton

The Centre

Rooms available for hire

The WMSET Centre West Street Wilton

The Jubilee Room

This is a light and airy room with a vaulted ceiling. It is suitable for meetings of up to 25 people (seated), and is equipped with a small kitchen area. The windows have blinds for those wanting to do a screen presentation.



The Garden Room

This smaller room is suitable for one-to-ones, but could sit up-to 8 for small groups or meetings around a table.

Both rooms have access to a small courtyard.



Room Hire

By the hour – 8am to 10pm

- ▶ Either single room from £8.00
- ▶ Both rooms from £15.00

By the Day – 9am to 5pm

- ▶ Either single room from £50.00
- ▶ Both rooms from £75.00

For availability and booking
www.wmset.org




CLICK or TAP to go back to the CONTENTS PAGE




DATE	2 June			9 June			16 June			23 June			30 June		
SUNDAY	Trinity 1			Trinity 2			Trinity 3			Trinity 4			Trinity 5		
SOUTHERN AREA															
Ansty	-	-	-	11.15	PC	JMH/JD	-	-	-	11.15	PC	MH	-	-	-
Compton Chamberlayne	09.30	AAS Celebration of pets	EB	-	-	-	-	-	-	-	-	-	-	-	-
Fovant	08.00	HC02T	EB	09.30	To Sutton	-	18.00	EBCP	EB	09.30	PC	TM	-	-	-
Sutton Mandeville	18.00	EBCP	EB	09.30	MP	JA	16.00	AAS	EB	09.30	To Fovant	-	-	-	-
Swallowcliffe	11.15	PC _T	MH	18.00	EBCP	JA	08.00	HCBCP	JMH	11.15	MBCP	LAY	11.15	Benefice Communion Patronal	JMH/+TT
NORTHERN AREA															
Barford St Martin	11.15	AAC	EB	09.30	McW	LAY	09.30	HCBCP	MG	09.30	AAC	EB	-	-	-
Baverstock	09.30	HC _{CW}	MH	-	-	-	-	-	-	-	-	-	-	-	-
Chilmark	11.15	AAC	JN	09.30	AAS	MG	11.15	AAC	EB	11.15	MPr/MBCP	LAY	-	-	-
Dinton	09.30	AAC	CF	-	-	-	09.30	AAC	EB	09.30	McW	JA	-	-	-
Teffont Evias	-	-	-	11.15	AAC	MG	-	-	-	11.15	AAC	EB	-	-	-
Teffont Magna	-	-	-	-	-	-	-	-	-	-	-	-	-	-	-
WESTERN AREA															
Chicklade	-	-	-	-	-	-	-	-	-	-	-	-	-	-	-
Hindon	09.30	PC	JN	09.30	AAC	JN	18.00	EBCP	JN	09.30	PC Patronal	JN	-	-	-
Fonhill Bishop	17.00	EBCP	JMH	08.00	HCBCP	JMH	09.30	MBCP	JN	-	-	-	-	-	-
Fonhill Gifford	08.00	HCBCP	JMH	11.15	MBCP	JA	-	-	-	11.15	MBCP	JMH/JA	-	-	-
Tisbury	09.30	AAS Pet Service	JMH/JA	09.30	PC	JMH/JD	09.30	PC	JMH	08.00	HCBCP	JMH	-	-	-
							18.00	EBCP Choral	JMH	09.30	PC Patronal	JMH	-	-	-

Come and join us for a time of quietness and space to find



Wholeness and Healing

We invite you to join us for our monthly time of contemplation – and so to pray for yourself and for those whom you care about in difficulty.




6.00pm Wednesday June 12th

St Andrew's Chapel,
St John the Baptist Church, Tisbury

ALL WELCOME
we look forward to seeing you

**We pray because we can
We care because we must.**




SERVICES

- AAC** All Age Communion
- AAS** All Age Service
- BCP** Book of Common Prayer
- CbE** Communion by Extension
- CW** Common Worship
- E** Evensong or Evening Prayer
- FC** All Age Family Communion
- HC** Holy Communion (*saic*)
- HC02T/C** Order 2 Communion, *traditional/contemporary*
- M** Mattins or Morning Prayer
- MPr** Morning Praise

- PC** Order 1 Communion (*with hymns*)
- PC_T** Order 1 Communion, *traditional language (with hymns)*
- PC02T** Order 2 Communion, *traditional language (with hymns)*
- PC02T/C** Order 2 Communion, *traditional/contemporary*
- RS** Reflective Service
- SoP** Songs of Praise
- SoW** All Age Service of the Word

CLERGY

- CF** Colin Fox
- EB** Elaine Brightwell
- JA** Judy Anderson
- JD** Julie Dunstan
- JMH** Juliette Hulme
- JN** Jo Naish
- MG** Michael Goater
- MH** Mark Hayter
- SE** Simon Evans
- TM** Tony Monds
- +TT** Right Revd Tim Thornton



FOR A HARD COPY OF THE CHURCH SERVICES ROTA PLEASE PRINT THIS DOUBLE PAGE SPREAD ON YOUR PRINTER.

IMPORTANT NOTE:
This PDF file treats each double page spread as a single page.

- 1) **Set your printer to print PAGE 23 ONLY**
- 2) **Ensure your page is set to LANDSCAPE orientation.**
- 3) **Ensure your printing is reduced to fit your A4 sheet (80%). Do not print at 100%.**

Our country churches



One of the joys of driving or walking around the Nadder Valley is the sight

of a church tower or spire coming into view in the landscape. As one gets closer, the building takes shape, and more often than not the church is open and one can enter, sit quietly and offer a prayer, or wander round looking at its architecture, monuments, stained glass windows, statues or sculptures and memorials. Often there are churchyards, with graves of local inhabitants and some have war graves too. Our churches are the gems of our villages, communities and countryside.

Yet did you know that they receive no income from the government to keep going? And all are struggling to manage? All the money for our churches, the upkeep of their buildings and churchyards, the ministry offered by the clergy in the form of services and pastoral care, has to be paid for by the congregations and communities. Some of the money goes directly to church maintenance costs and some to the central body of the different denominations (Church of England, Catholic, Methodist) which then pays its clergy. This is a huge burden on all congregations and needs to be shared by the whole community. The churches are there for all of you, whether you regularly attend or not. Your church is sometimes the only community space in a small village. Your church is open for everyone. You can all go in to sit quietly and get away from the stresses of the day, and for many people it is important that the church is there for Christmas carol services, family weddings, baptisms and funerals. For some of you, it is important to go to a Sunday service weekly or monthly in your local church. Your village would not be the same without this beautiful, important historical building and all it offers. Unless our local communities realise the need to support their



St Editha, Baverstock

churches financially, they will be unable to be open so regularly, remain in a good state of repair or have ministers to offer services so often, or be able to minister in the community. So if you value your church to look at, sit in, pray in, worship in, celebrate key life events in, don't just drop the odd pound in the box, but give a generous donation as often as you

can, to enable your church and its clergy and other ministers to be here for you, now and in the future.

Revd Juliette Hulme, Team Vicar

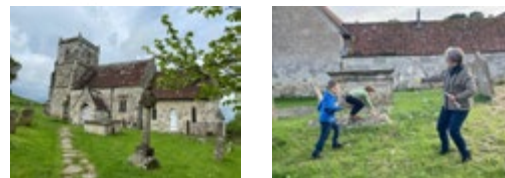


Sutton Mandeville

Would you like to take your children to church but find your Sunday morning too busy or too sleepy?



We might be an answer – come and join our friendly All Age Service at All Saints, Sutton Mandeville



Third Sunday every month at 4pm – just come along or contact Felicity Berry: 07899 924938 felicityberry01@gmail.com

ADVERTISE WITH US FOR 6 MONTHS — Half page – £60 | Whole page – £120 | Double page spread – £180
ADVERTISE WITH US FOR A WHOLE YEAR — Half page – £100 | Whole page – £200 | Double page spread – £300



SUDOKU solution
June 24
from page 40

8	1	7	2	3	6	4	5	9
3	4	6	7	9	5	8	2	1
5	2	9	4	8	1	3	7	6
1	5	8	9	6	3	7	4	2
2	9	3	8	7	4	1	6	5
7	6	4	1	5	2	9	3	8
4	7	2	6	1	8	5	9	3
6	8	5	3	4	9	2	1	7
9	3	1	5	2	7	6	8	4

CROSSWORD Solution
June 24
from page 41

I D L E N E S S G P I H
 N E A E I O R L A N D O
 C A T A M A R A N B A F L
 I L L E G D R I F T W O O D
 T R O U S S E A U E S I
 E O A T E L M A S S E T
 S B A N C I O U W I C
 G R E B E T O O C I C
 A L L T U N H E L P F U L
 U L L S W A T E R I I T O
 C A E O S I G H T L E S S
 H A R D E S T E A R S E
 O D D N E I N V E N T O R

WOULD YOU LIKE TO ADVERTISE WITH US BUT HAVE NO ARTWORK?

**We will design and produce your ad for FREE*
 * Minimum order, half page for 6 months.**

jan@villagebuzz.online

Contact details:
Editor: Gill Fisk | gill@villagebuzz.online
Design & Advertising:
 Jan Kalinowski | jan@villagebuzz.online
 mobile: 07881 288027

Advertising and article submission deadline



Monday 24 June

If you plan to submit ready-made advertising please ensure that the file is in the format of either a high resolution Acrobat PDF file or a high resolution JPEG (300ppi) file – thank you.

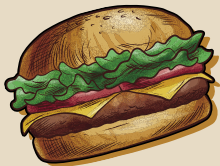


TEFFONT VILLAGE SHOW

SATURDAY 24 AUGUST 2024



DELICIOUS FOOD & DRINKS
FRESH CAKES & LOCAL PRODUCE
LOCAL CRAFT STALLS & BAND
DOG RACES



TRADITIONAL GAMES & TUG OF WAR
BOTTLE STALL & RAFFLE



2-5PM

THE MANOR, TEFFONT EVIAS, SP3 5RJ

PROCEEDS TO:

WILTSHIRE AIR AMBULANCE SALISBURY HOSPICE



CLICK or TAP
to go back to
CONTENTS PAGE

KINDLY SUPPORTED BY:



www.ruralview.co.uk



www.villagebuzz.online